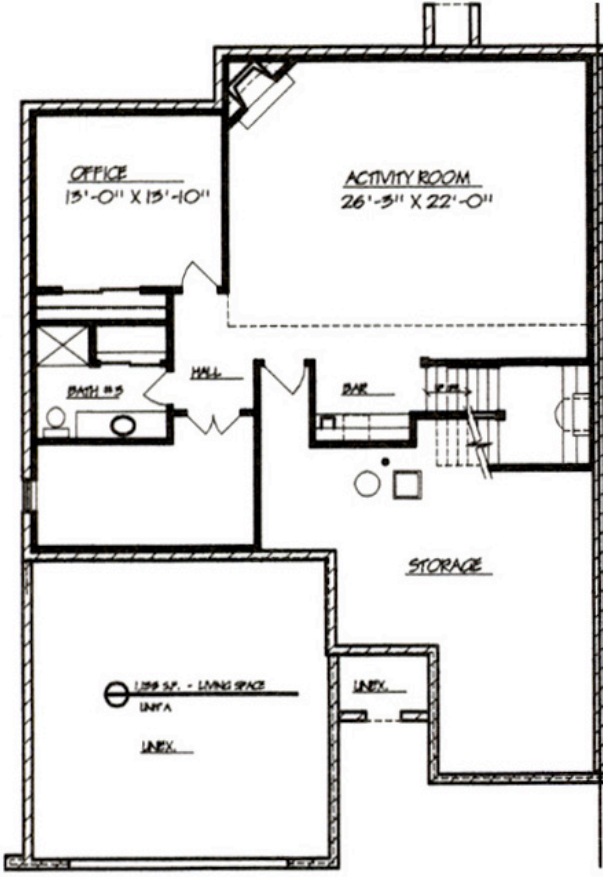
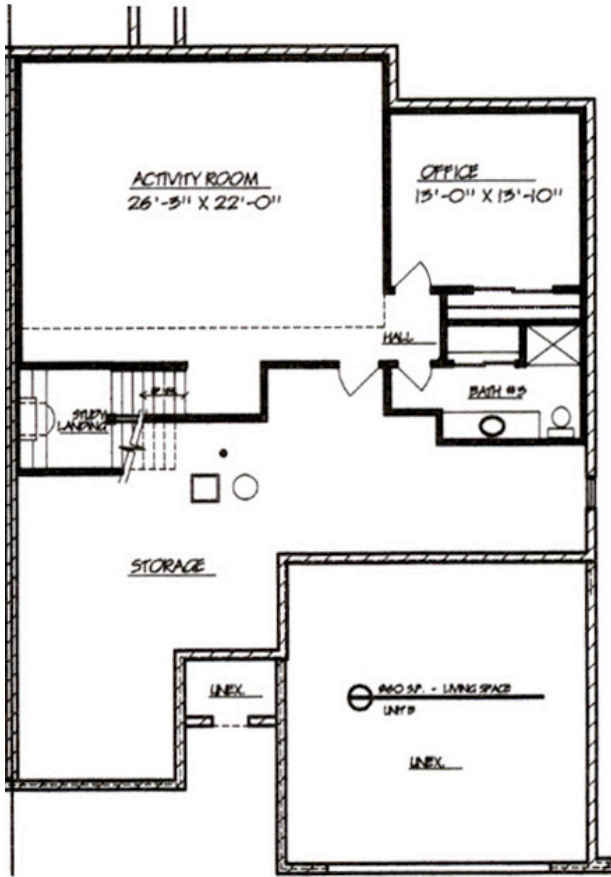


## Paloverde

### Finished Lower Level Options



#### **Finished Basement Option A**

960 Sq. Ft.

- Office with closet
- Activity Room
- Full bathroom: toilet, sink, shower, vanity, tile floor, mirror, shower door and storage closet

#### **Finished Basement Option B**

1135 Sq. Ft.

- Office & Walk In Closet
- Exercise Room with French Doors
- Activity room
- Gas fireplace w/ wood mantle & remote
- Wet Bar with granite top
- Full Bathroom, toilet, sink shower, vanity, tile floor, mirror, & shower door

#### **Finished Basement Standard Features:**

- Wall Framing
- R-13 Wall insulation
- Drywall walls and ceilings
- Knock Down Drywall texture
- Electrical outlets every 8' per code
- Recessed lights per plan
- 2 1/2" casing and 3 1/4" base
- 6 Panel pine doors
- Wall Painting (one color)
- Staining, sanding, varnish of woodwork
- Mohawk Carpet with 6lb pad
- 12" x12" Ceramic Tile floor at bathroom
- White Wellworth Toilet
- Vanity with molded marble top, mirror, & exhaust fan
- Glass shower door
- Wood Hanging Pole and shelf in closets
- Permits
- \$250 Lighting allowance
- Cleanup & Disposal

**(262) 544-4648**

**[www.woodlandhillswaukesha.com](http://www.woodlandhillswaukesha.com)**